

LEDinUSA.com



High-end Indoor and Outdoor LED Poster



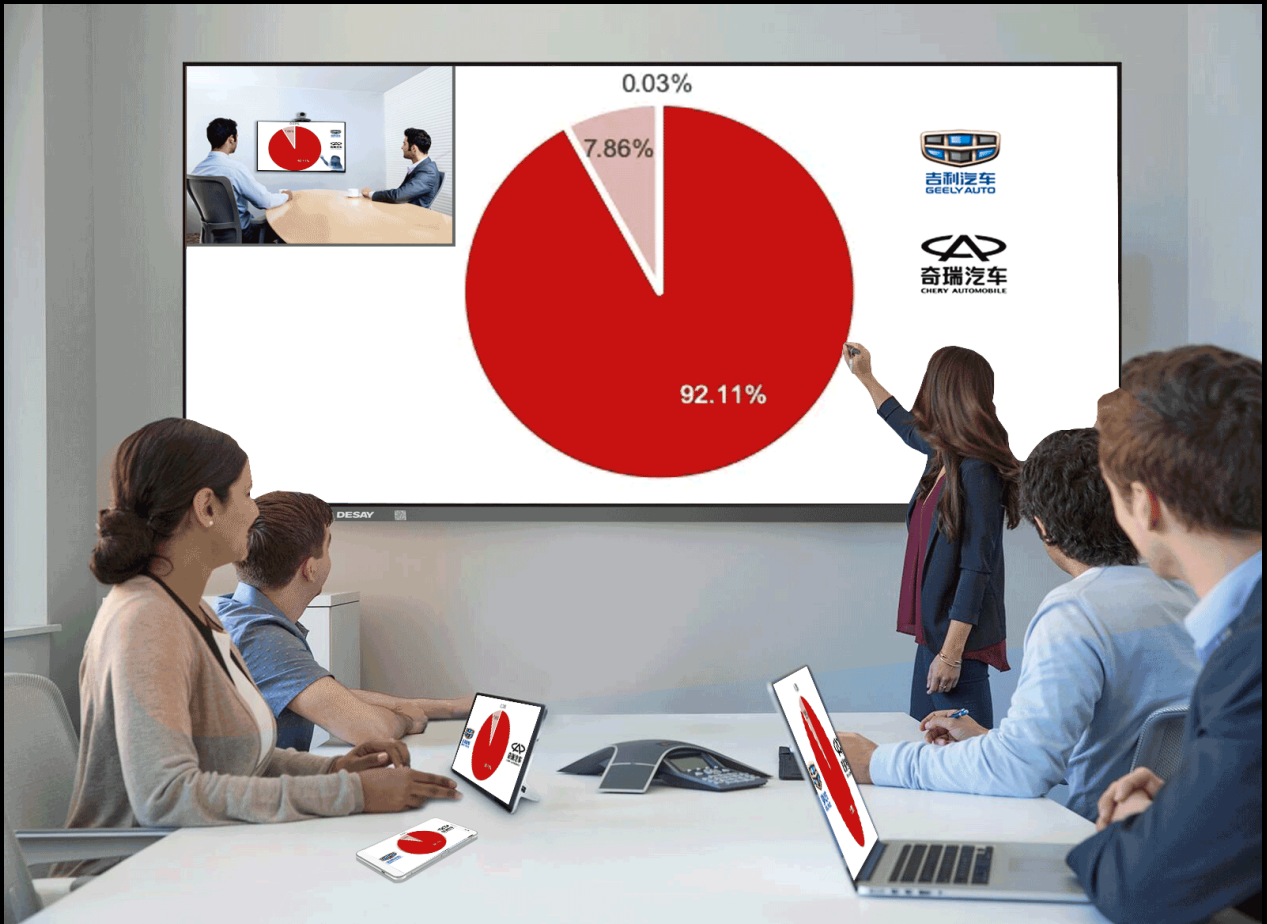
Advantages for BRAND STORES

- High brightness, even in bright places, with perfect quality
- High degree of color reproduction, wide viewing angle, wide advert coverage, and remarkable playing performance
- Plug and play, touch screen, easy to use
- Supports multiple video formats or various kinds of pictures for display
- Various installations, floor movement, wall-mounted, hoisting, splicing, and inclined installation can be realized

- Company video conference system
- Advertising in brand stores, 4S stores, etc.
- Plug and play, indoor and outdoor use
- Multiple installation-hanging, standing, wall-mounted
- Support WIFI, 4G, network control
- 140° wide viewing angle, good vision



LED Posters used for video conference



LED Posters for Events





Multiple LED Posters with One Image



Indoor LED Poster Advertising



Standing and Movable Installations



Indoor and Outdoor

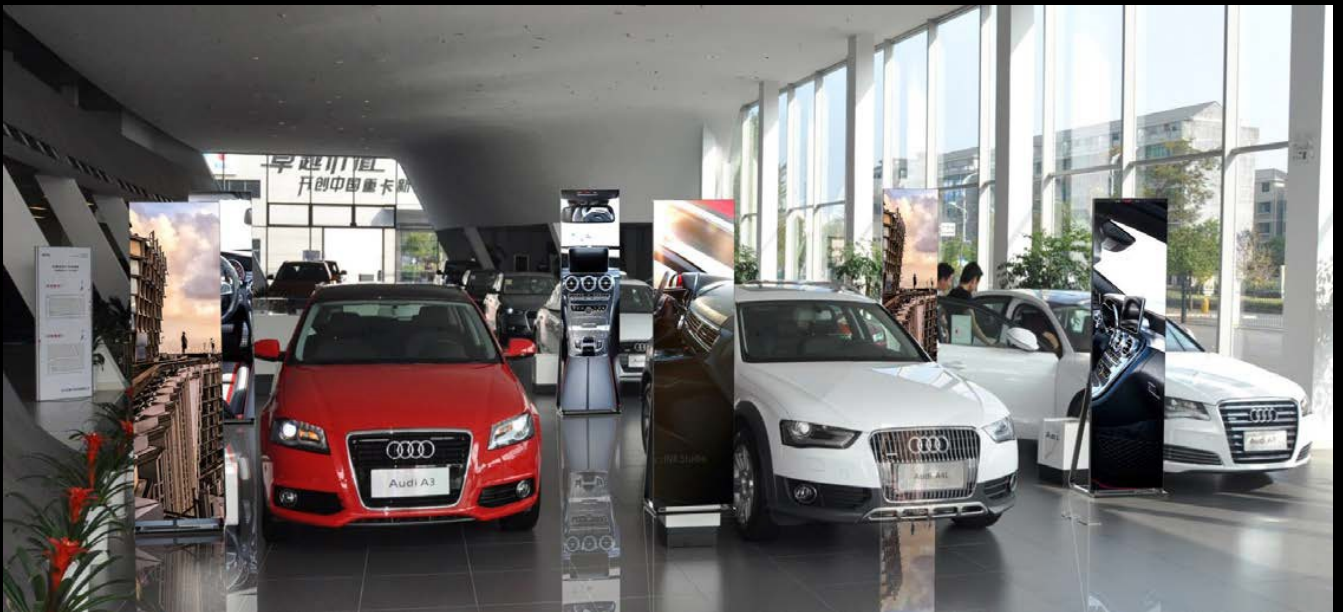


Floor Promotions & Sales





Branding & Information



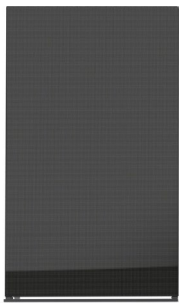


Exhibitions





Versatility



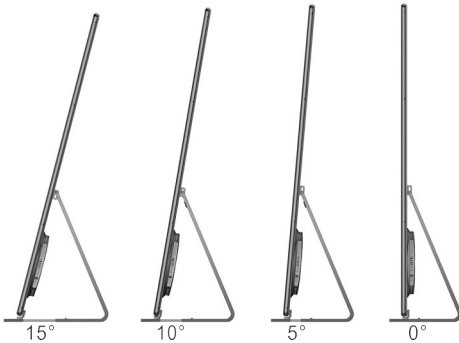
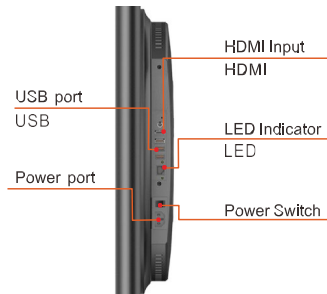
1944X1152mm



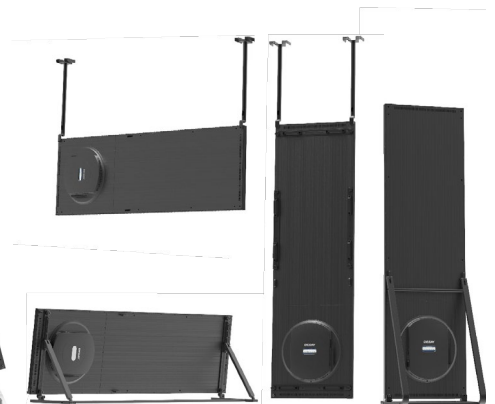
576X1944mm



Double-sided



Adjustable floor stand



Multiple installation



租赁
Rental



异型拼接
Profiled Stitching



静音
Noise Free

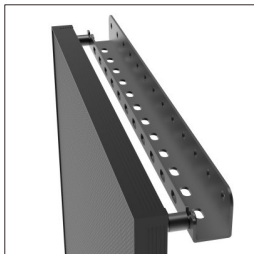
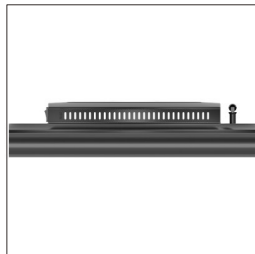


高清
High
Definition



超薄
Ultra Slim

CE ETL RoHS EMC





Parameter	Unit	AT1.9i	AT2.5i	AT1.9	AT2.5
Pixel pitch	mm	1.995	2.571	1.995	2.571
Brightness	nits	800	1000	2500-3000	3000-4000
Pixel configuration	R/G/B	SMD 3 in 1			
Colour temperature	deg.K	6500			
Viewing angle-Horizontal (50% brightness)	deg.	160 (+80/-80)			
Viewing angle-Vertical (50% brightness)	deg.	140 (+70/-70)			
Recommended minimum viewing distance	m	1.9	2.5	1.9	2.5
Panel width	mm	2355		2385	
Panel height	mm	1348		1408	
Panel depth	mm	90		105	
Panel area	m ²	3.1745		3.3581	
Panel material		Alloy Aluminum			
Panel weight	Kg	120		180	
Ingress protection (front/rear)	IP	41/30		65/54	
Pixel matrix per panel		1152x648	896x504	1152x648	896x504
Brightness control		255			
Digital processing	bit	14			
Frame rate	Hertz	50~60			
Display refresh rate	Hertz	2880			
Input voltage	VAC	100~240			
Input power frequency	Hertz	50~60			
Input power (Max.)	W/m ²	536	504	473	473
Input power (Avg.)	W/m ²	187	176	165	165
Operating temperature range	deg. C	-10~+40			
Lifetime (50%brightness)	Hour	100,000			



Commercial Advertising Display Parameters

Parameter	Unit	A1.9i	A2.5i	A1.9	A2.5
Pixel pitch	mm	1.995	2.571	1.995	2.571
Brightness	nits	800	1000	3000	3500
Pixel configuration	R/G/B	SMD 3 in 1			
Colour temperature	deg.K	6500			
Viewing angle-Horizontal (50% brightness)	deg.	160 (+80/-80)			
Viewing angle-Vertical (50% brightness)	deg.	140 (+70/-70)			
Recommended minimum viewing distance	m	1.9	2.5	1.9	2.5
Panel width	mm	614		657	
Panel height	mm	1982		2250	
Panel depth	mm	40		85	
Panel area	m ²	1.2169		1.4783	
Panel material		Aluminum			
Panel weight	Kg	35		67	
Ingress protection (front/rear)	IP	41/30		65/54	
Pixel matrix per panel		288x972	224x756	288x972	224x756
Brightness control		255			
Digital processing	bit	13			
Frame rate	Hertz	50~60			
Display refresh rate	Hertz	2880			
Input voltage	VAC	100~240			
Input power frequency	Hertz	50~60			
Input power (Max.)	W/m ²	590	492	600	620
Input power (Avg.)	W/m ²	206	172	210	217
Operating temperature range	deg.C	-20~+40			
Lifetime (50%brightness)	Hour	100,000			